



Overview

Preterm birth is the birth of an infant before 37 weeks of pregnancy. Preterm birth is the leading cause of infant mortality and preterm infants are at higher risk of long-term neurological problems, respiratory issues, cardiovascular complications, infections, and other serious health issues.¹ Infants born before the 34th week of pregnancy, very preterm, have the highest risk for early death and ongoing health problems, but even late preterm infants (34 to 36 weeks of pregnancy) have greater health risks than full-term babies.²

The Healthy People 2020 objective is to reduce the percent of infants born preterm to 11.4%. While this goal has been achieved for Sonoma County overall, disparities continue among births to Asian/Pacific Islander residents as well as among births to women 40 years and older.

Trend

- From 2000-2002 to 2011-2013 the percent of births born preterm among Sonoma County residents increased significantly. At the same time the preterm birth rate for the state experienced a significant decrease.
- Sonoma County continued to have a significantly lower rate of preterm births than California.

Figure 1. Percent births born preterm, three year moving average— Sonoma County and California 2000-2013

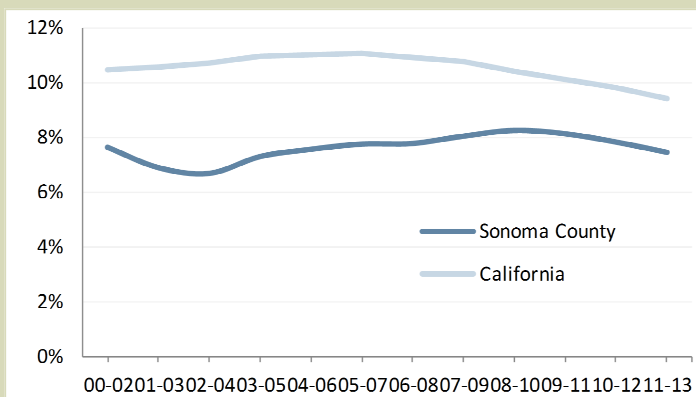
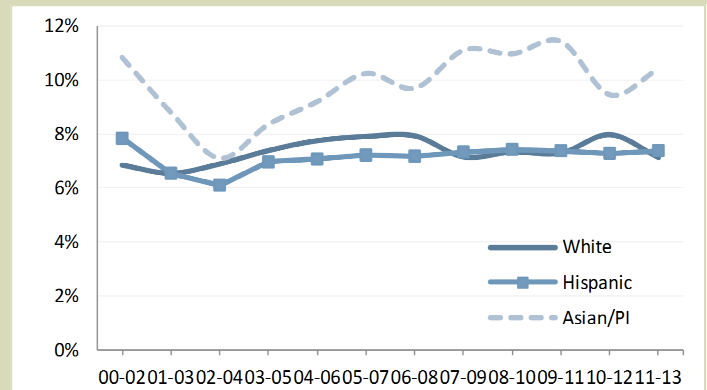


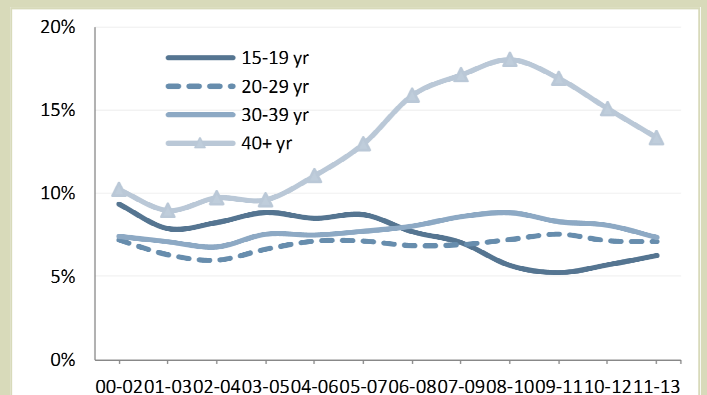
Figure 2. Percent births born preterm by mother’s race/ethnicity, three year moving average— Sonoma County 2000-2013



Race/Ethnicity[‡]

- There was no significant change over the time period in the percent of births born preterm among white, Hispanic or Asian/Pacific Islander mothers in Sonoma County.
- For 2011-2013 the preterm birth rate among Asian/Pacific Islander residents was significantly higher than among white or Hispanic residents.

Figure 3. Percent births born preterm by mother’s age, three year moving average— Sonoma County 2000-2013

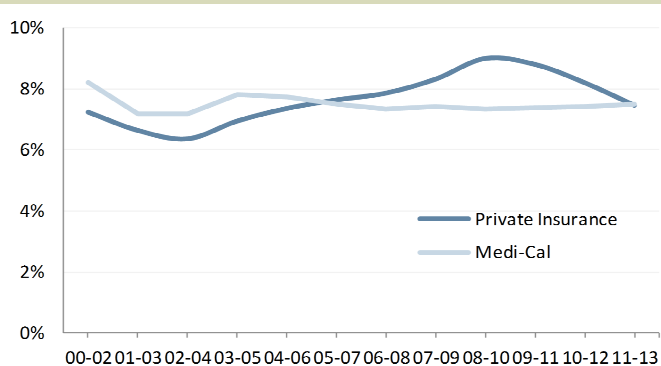


Age of Mother

- From 2000-2002 to 2011-2013 the percent of births born preterm decreased significantly among women 15-19 years but increased significantly among mothers 30-39 and 40+ years.
- The percent of births to women 40 years and older that were preterm continued to be significantly higher than for women of other age categories.

[‡] Only race/ethnicities with stable rates are presented (n>10)

Figure 4. Percent births born preterm by pay source, three year moving average— Sonoma County 2000-2013



Pay Source

- From 2000-2002 to 2011-2013 the percent of births born preterm increased significantly among deliveries paid for by private insurance. There was no significant change for Medi-Cal funded births.
- The percent of births born preterm was similar for deliveries funded by private insurance and those paid by Medi-Cal.

Table 1. Percent of births born preterm births¹, three year moving average— Sonoma County 2000-2013

	2000-2002	2001-2003	2002-2004	2003-2005	2004-2006	2005-2007	2006-2008	2007-2009	2008-2010	2009-2011	2010-2012	2011-2013	
Sonoma County	7.6%	6.9%	6.7%	7.3%	7.5%	7.7%	7.8%	8.0%	8.2%	8.1%	7.8%	7.4%	^
California	10.4%	10.5%	10.7%	10.9%	11.0%	11.1%	10.9%	10.7%	10.4%	10.1%	9.8%	9.4%	v
<i>Race/ethnicity</i>													
White non-Hispanic	6.8%	6.5%	6.9%	7.4%	7.8%	7.9%	7.9%	7.1%	7.3%	7.3%	8.0%	7.1%	
Hispanic	7.8%	6.5%	6.1%	7.0%	7.1%	7.2%	7.2%	7.3%	7.4%	7.4%	7.3%	7.4%	
Asian/Pacific Islander	10.8%	8.8%	7.1%	8.4%	9.2%	10.2%	9.7%	11.1%	11.0%	11.4%	9.4%	10.4%	
<i>Mother's age</i>													
15-19 yr	9.3%	7.9%	8.2%	8.8%	8.5%	8.7%	7.7%	7.0%	5.7%	5.3%	5.7%	6.3%	v
20-29 yr	7.2%	6.3%	6.0%	6.6%	7.1%	7.1%	6.8%	6.9%	7.2%	7.6%	7.1%	7.1%	
30-39 yr	7.4%	7.1%	6.8%	7.5%	7.5%	7.7%	8.0%	8.6%	8.8%	8.3%	8.1%	7.3%	^
40+ yr	10.2%	9.0%	9.7%	9.6%	11.1%	13.0%	15.9%	17.1%	18.0%	16.9%	15.1%	13.3%	^
<i>Pay source for delivery</i>													
Private Insurance	7.2%	6.6%	6.4%	6.9%	7.4%	7.6%	7.9%	8.3%	9.0%	8.8%	8.2%	7.5%	^
Medi-Cal	8.2%	7.2%	7.2%	7.8%	7.7%	7.5%	7.3%	7.4%	7.3%	7.4%	7.4%	7.5%	

¹ Of all live births with known gestational age

v Significant decrease from 2000-2002 to 2011-2013 p<.05

^ Significant increase from 2000-2002 to 2011-2013 p<.05

Table 2. Percent of birth born preterm by maternal characteristics, three year average— Sonoma County 2011-2013

	Annual average	% total births	95% Confidence Interval
Sonoma County	375	7.4%	7.0-7.9
California	46226	9.4%	9.3-9.5
<i>Race/ethnicity</i>			
White non-Hispanic	168	7.1%	6.5-7.8
Hispanic	146	7.4%	6.7-8.1
Asian/Pacific Islander	24	10.4%	8.2-12.9
<i>Mother's age</i>			
15-19 yr	16	6.3%	4.7-8.2
20-29 yr	161	7.1%	6.5-7.7
30-39 yr	169	7.3%	6.7-8.0
40+ yr	29	13.3%	10.8-16.2
<i>Pay source for delivery</i>			
Private Insurance	208	7.5%	6.9-8.1
Medi-Cal	162	7.5%	6.9-8.2

References

1. March of Dimes (2012). What we know about prematurity. Retrieved from www.marchofdimes.com/mission/prematurity_indepth.html
2. Martin JA, Hamilton BE, Sutton PD, Ventura SJ, et al. (2009). Births: Final data for 2006. National Vital Statistics Reports, 57(7). Hyattsville, MD: National Center for Health Statistics.