



Overview

The death of a child is an extreme loss not only to the child’s family but to the larger community. The leading cause of death to children 1 to 19 years is injury, responsible for almost 40% of all child deaths. Many fatal injuries can be prevented through environmental, behavioral, social and legislative change.¹

The Healthy People 2020 objectives to reduce the rate of death to children by age group to the target rate are as follows:

- 1-4 years: 26.5/100,000
- 5-9 years: 12.4/100,000
- 10-14 years: 14.8/100,000
- 15-19 years: 54.3/100,000

Sonoma County has met the Healthy People 2020 targets for all age groups. Death rates for children 1-19 years continue to decrease but many potentially preventable deaths still occur each year.

Trend

- The Sonoma County child death rate decreased significantly from 2000-2002 to 2011-2013.
- There continued to be no significant difference between the Sonoma County child death rate and that of California.

Figure 1. Child death rate, three year moving average— Sonoma County and California 2000-2013

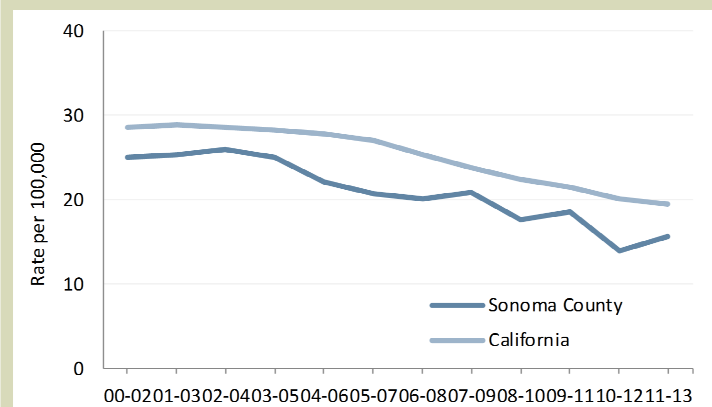
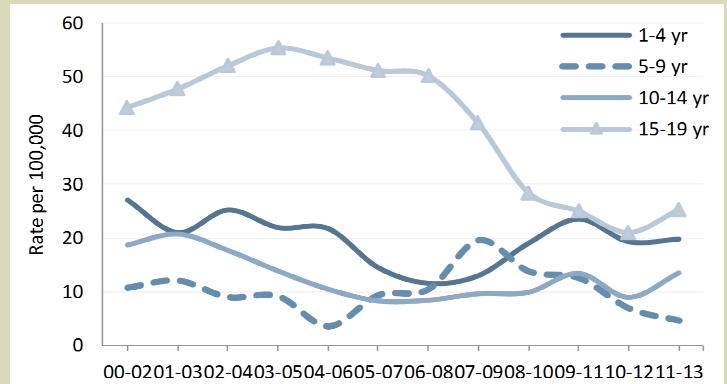


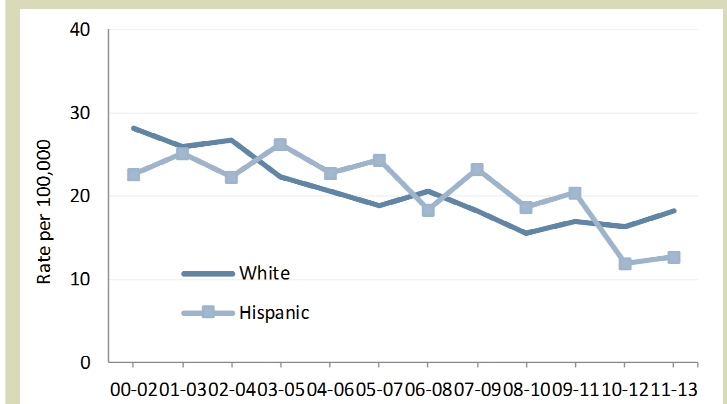
Figure 2. Child death rate by age at death, three year moving average— Sonoma County 2000-2013



Age at Death

- From 2000-2002 to 2011-2013 the Sonoma County child death rate decreased significantly among children 10 to 14 years and 15 to 19 years.
- There was no significant difference in child death rates among the four age categories.

Figure 3. Child death rate by race/ethnicity, three year moving average— Sonoma County 2000-2013



Race/Ethnicity[‡]

- The child death rate decreased significantly for both white, non-Hispanic and Hispanic children in Sonoma County during the time period.
- There was no significant difference in the death rates for white, non-Hispanic and Hispanic children.

[‡] Only race/ethnicities with stable rates are presented (n>10)

Table 1. Leading causes of child death by age— Sonoma County 2009-2013

	Rank		
	1ST	2ND	3RD
1-4 YEARS	BIRTH DEFECTS	CANCER	UNINTENTIONAL INJURIES
5-9 YEARS	UNINTENTIONAL INJURIES	CANCER	BIRTH DEFECTS
10-14 YEARS	CANCER	UNINTENTIONAL INJURIES	INFLUENZA/PNEUMONIA
15-19 YEARS	UNINTENTIONAL INJURIES	SUICIDE	CANCER

Cause of Child Deaths

- For the five year period 2009-2013 , the leading cause of child death for children of all ages was injury. Unintentional injury was responsible for about 22% of all deaths and homicide and suicide was responsible for about 16% of deaths.
- Cancer was a leading cause of death for all age groups and was the second leading cause of death overall for children 1 to 19 years.
- California death data from 2010-2012 indicate similar leading causes of death by age category. By age the top three causes of death were (1st leading to 3rd leading cause):
 - 1-4 years:** unintentional injuries, birth defects, and cancer.
 - 5-14 years:** cancer, unintentional injuries and birth defects.
 - 15-19 years:** unintentional injuries, homicide and suicide.

Table 2. Child death rate by race/ethnicity and age at death , three year moving average— Sonoma County 2000-2013

	2000-2002	2001-2003	2002-2004	2003-2005	2004-2006	2005-2007	2006-2008	2007-2009	2008-2010	2009-2011	2010-2012	2011-2013	
Sonoma County	25.1	25.4	25.9	25.0	22.2	20.8	20.2	20.9	17.7	18.5	13.9	15.7	v
California	28.6	28.9	28.5	28.3	27.9	27.1	25.4	23.7	22.5	21.5	20.1	19.5	v
<i>Race/ethnicity</i>													
White non-Hispanic	28.2	25.9	26.6	22.4	20.5	18.8	20.5	18.1	15.5	17.0	16.3	18.1	v
Hispanic	22.6	25.1	22.3	26.2	22.7	24.3	18.4	23.3	18.6	20.4	11.9	12.7	v
<i>Age at death</i>													
1-4 yr	27.1	21.0	25.2	22.0	21.8	14.5	11.6	13.0	19.0	23.5	19.3	19.8	
5-9 yr	10.7	12.1	9.0	9.1	3.5	9.3	10.4	19.6	13.8	12.5	6.8	4.5*	
10-14 yr	18.7	20.8	17.7	13.9	10.5	8.3	8.4	9.6	9.9	13.4	9.0	13.5	v
15-19 yr	44.3	47.7	52.0	55.4	53.5	51.2	50.2	41.3	28.4	25.0	21.0	25.3	v

v Significant decrease from 2000-2002 to 2011-2013 p<.05

^ Significant increase from 2000-2002 to 2011-2013 p<.05

*Relative standard error >30%. Rate is unreliable, interpret with caution

Table 3. Child deaths, three year average— Sonoma County 2011-2013

	Annual average	Rate per 100,000	95% Confidence Interval
Sonoma County	18	15.7	11.8-20.5
California	1969	19.5	19.0-20.0
<i>Race/ethnicity</i>			
White non-Hispanic	10	18.1	12.3-25.7
Hispanic	6	12.7	7.4-20.3
<i>Age at death</i>			
1-4 yr	4	19.8	10.5-33.9
5-9 yr	1	4.5*	1.2-11.5
10-14 yr	4	13.5	7.0-23.6
15-19 yr	8	25.3	16.4-37.3

*Relative standard error >30%. Rate is unreliable, interpret with caution

References

1. Centers for Disease Control and Prevention. (2012). *Child injury. CDC Vital Signs*. Retrieved from: <http://www.cdc.gov/VitalSigns/pdf/2012-04-vitalsigns.pdf>